



Thank you for choosing the 200 Lumen Trionic LED Front Light.

This manual both shows how you attach the LED light on a Walker (left column below) and also how you attach it on a Veloped (right column below).

In the left-hand photo, **A** shows the holder attachment parts for a Walker (2 screws + 2 washers). **B** shows the holder attachment parts for a Veloped (1 screw + 1 knurled nut + 1 nut).

Attaching the Light Holder

Instructions for a Walker



A1. Of the two rubber straps included, choose the one with a 10-degree angled light attachment section.



A2. Push the light into the slot of the strap until it snaps in place.

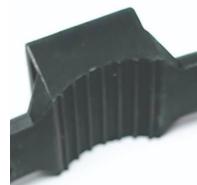


A3. Attach the light to the Walker, either on the semi-vertical frame tube just below the height adjustment quick-release lever, or on the black semi-vertical grip tube.



A4. Pull the strap tight and fix it with the plastic hook.

Instructions for a Veloped



A1. Of the two rubber straps included, choose the one with a 0-degree angled light attachment section.



B2. Push the light into the slot of the strap until it snaps in place.



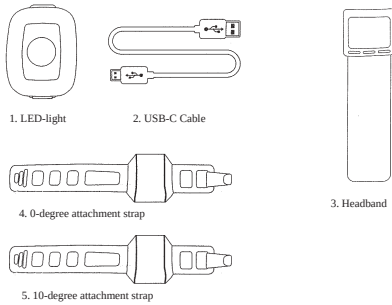
B3. Attach the light to the Veloped, preferably the right or left of the hinge on the U-shaped grip bar. Pull the strap tight and fix it with the plastic hook.



B4. Pull the strap tight and fix it with the plastic hook.

Instructions for Use

The package contains



Caution

It is normal for the battery to reach a high temperature (up to 104°F / 40°C) during charging due to chemical reactions within the battery. The battery may also become warm if it is not fully drained before charging.

Several factors can affect the battery's lifespan, including the type of cell, usage strain, maintenance routine, temperature, and the number of charge cycles. Generally, a higher battery capacity results in a longer operation time.

The battery capacity may decrease to approximately 80% of its original capacity after 300–500 charge/discharge cycles. With proper care, the battery can have a lifespan of up to 3 years.

Water resistant is for rain water only. Do not submerge the battery or the whole light into water when cleaning. Clean the light with a soft damp cloth when needed.

Battery Performance

Battery performance is significantly affected by temperature variations:

Low Temperature: At 0°C, capacity decreases by 5–10%, reducing operation time by 50%. At -20°C, capacity drops by 30%, potentially shortening operation time by 70%. Performance returns to normal when the temperature rises to 20°C.

Self-Discharge Rate: At room temperature, the battery loses about 1% of its capacity per day. When stored at 40°C, the self-discharge rate increases, leading to a loss of approximately 5% of capacity per day.

To maintain optimal battery performance, avoid exposing it to extreme temperatures and store it in a cool, dry place.

If you do not use the battery for a long time be sure to recharge the battery every 3 months.

How to charge the battery

1. Find the charging place at the bottom of the light.
2. Lift the rubber cover to access the charging port.
3. Plug the USB-cable into your USB-charger.
4. Plug the charging cable into the light's charging port.
5. The indicator shows red during charging.

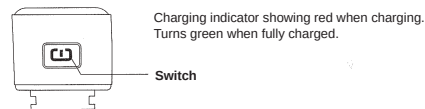


The charging indicator turns green when fully charged.

Attention: Use the original supplied USB-cable to charge the battery. Unplug the charging cable once the battery is fully charged.

How to operate the light

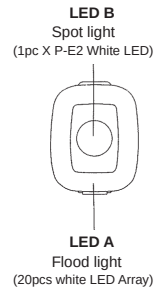
Press and hold the switch for 2 seconds to turn the light on or off. Click once to cycle through modes.



Long press = on/off. One single click to switch modes.

Mode	Runtime
Steady Mode ▼ SINGLE CLICK LED A 100% Steady ▼ SINGLE CLICK LED A 50% Steady ▼ SINGLE CLICK LED B 100% Steady ▼ SINGLE CLICK LED B 50% Steady ▼ SINGLE CLICK ALL LED 100% Steady ▼ SINGLE CLICK ALL LED 50% Steady	1.5h + 30mins SAFEMODE 4h + 30mins SAFEMODE 2h + 30mins SAFEMODE 4h + 30mins SAFEMODE 1.5h + 30mins SAFEMODE 3h + 30mins SAFEMODE
Flash Mode ▼ SINGLE CLICK LED A Flash ▼ SINGLE CLICK LED B Flash ▼ SINGLE CLICK LED A & B Flash alternatively ▼ SINGLE CLICK LED A 100% Steady & B Flashing	4h + 30mins SAFEMODE 4h + 30mins SAFEMODE 4h + 30mins SAFEMODE 2h + 30mins SAFEMODE

DOUBLE CLICK



With memory mode function

Safe Mode

When the battery is low, the light will automatically switch to a 5-lumen steady mode, providing an additional 30 minutes of operation.